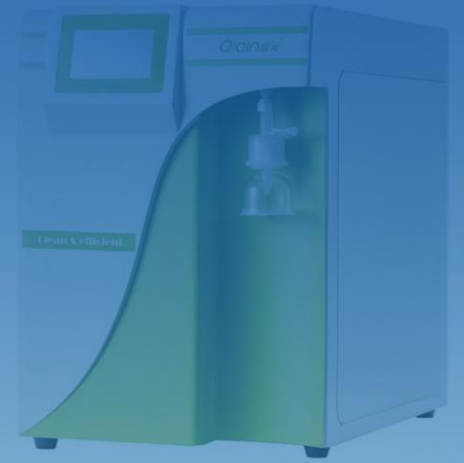


www.globalequipx.com



GlobalEquipX[®]

One-stop Solution

Walk-in stability chamber

Vertical High Speed Centrifuge

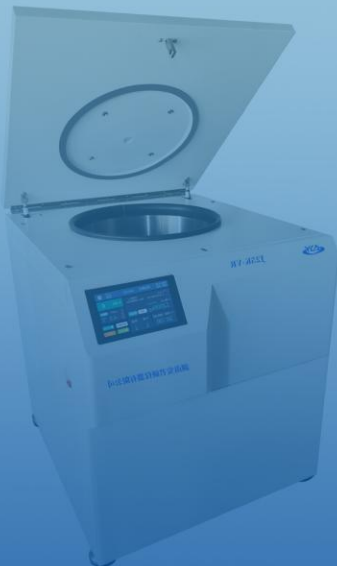
Claw Vacuum System

Laboratory Glassware Washer

MVR Evaporator

Hot Melt Extrusion System

Purified Water Equipment



CONTENTS

Hangzhou GlobalEquipX Information Technology Co., Ltd.	1
Hunan Anjunyan Instrument Co., Ltd.	3
J22K-VMR Vertical High Speed Refrigeration Centrifuge	4
J21K-LR Benchtop High Speed Large Capacity Refrigerated Centrifuge (High and Low Speed)	5
Shanghai Aifa Technology Co., Ltd.	6
Vertical Claw Vacuum System	7
Screw Vacuum Unit	8
Stier (Guangzhou) Instrument Co., Ltd.	9
Laboratory Glassware Washer S8000D	9
Tabletop Laboratory Glassware Washer S20	9
Yan Jialong Mechanical Technology(Jiangsu)Co.,Ltd.	10
MVR Evaporator	11
Vacuum Dryer	12
Pharmaceutical Processing Solution Co., Ltd.	13
Hunan Qiqin Environmental Protection Technology Co., Ltd.	14
Purified Water Equipment For Biopharmaceuticals	15
Central Pure Water System for Laboratory (dual-core)	16
Ultrapure Water System Q-STER-T Series	16
Jiangsu Labonce Instrument Co.,Ltd.	17
Walk-in Stability Chamber	17
Stability Chamber FS	18
Stability Chamber GS-FC	19
Photostability Chamber	20

PLATFORM INTRODUCTION

GlobalEquipX is a platform established in 2024 to revolutionize the procurement and supply chain for China's medical equipment, laboratory instruments, consumables, and pharmaceutical manufacturing equipment industries.

At GlobalEquipX, we aim to build a seamless and efficient ecosystem connecting manufacturers, distributors, and end-users. Whether you are a supplier looking to expand your market reach or a buyer seeking reliable and high-quality products, GlobalEquipX is designed to meet your needs with precision, efficiency, and transparency.

24H

24 hours online
display

100+

100 + purchaser
database

1

SEO optimized
search ranked No 1

10Y

Founder 10 years
of reputation
escort

OUR MISSION

Empowering Manufacturers

By providing a digital platform, we help manufacturers expand into international markets and achieve cross-border growth.

Simplifying Procurement

We offer buyers a one-stop solution for diverse product categories and streamlined processes.

Ensuring Quality

We rigorously select our partners to ensure every product meets industry standards and global market demands.

What can our platform offer?

- Our platform specializes in providing high-quality experimental equipment, consumables, and analytical instruments to research institutions, university laboratories, and corporate R&D departments.
- We collaborate with renowned domestic and international brands to offer a comprehensive range of products, including science lab equipment, medical laboratory instruments, analytical instruments, biochemical reagents, laboratory furniture, etc.
- We have a professional customer service team to provide product consultation, technical support, and after-sales service.

What are the advantages of your platform, and why should i choose you instead of contacting chinese manufacturers directly?

By choosing our platform, you can benefit from the following advantages:

· One-Stop Service

We integrate numerous high-quality Chinese instrument and equipment manufacturers, so you don't need to expend energy contacting multiple suppliers.

· Quality Screening

We rigorously screen our suppliers, thereby reducing your selection risk.

· Professional communication

Our team is proficient in many languages, familiar with international trade processes, and can effectively communicate and solve problems. If you encounter problems in the process of use, you can contact us in time.

· Risk Mitigation

We offer transaction guarantees and after-sales support, helping you avoid the risks associated with direct procurement.

· Cost Optimization

Through bulk purchasing and optimized processes, we strive to offer you more competitive pricing.



HUNAN ANJUNYAN INSTRUMENT CO., LTD.

COMPANY INTRODUCTION

Hunan Anjunan Instrument Co., Ltd. is a specialized high-tech manufacturing enterprise that integrates design, R&D, production, sales, and after-sales service.

Anjunan's primary products are centrifuges and other specialized instruments and equipment. By adopting cutting-edge technologies from both domestic and international markets, the company continuously attracts top talent and focuses on R&D and innovation. We have obtained international CE Product Certification and ISO 9001:2015 Quality Management System Certification, providing high-quality products to universities, research institutions, biopharmaceutical companies, food safety and hygiene sectors, pharmaceutical manufacturers, blood banks, and medical institutions in both China and international markets.

Company Motto: "Safety with you, precision in research."

Alternative: "Safety and Precision, Always."

Company Vision: To create commercial value that meets customer expectations and to become a leading enterprise in the centrifuge industry.

Company Values: Customer-centric, committed to hard work, continuous learning, and constant innovation.



Refrigeration Centrifuge

+86-15084892562
 anjunyan2018@163.com
 www.hunanlixinji.com



1 J22K-VMR Vertical High Speed Refrigeration Centrifuge

● Applications

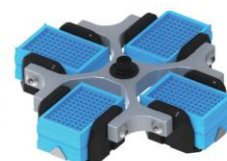
It is widely used in clinical medicine, life science, bioengineering, biochemistry, medical research, agriculture and animal husbandry, biopharmaceuticals and other fields.



Angle rotor:8×50m



Angle rotor:4×250ml H



Horizontal rotor :
2×4×96Enzyme-linked plate

● Product Features

- Steel body, high torque brushless AC inverter motor drive: no toner pollution, low noise, low vibration, high speed control accuracy.
- Programmable 7-inch color touch screen display: rotation speed, centrifugal force, running time, rotor number and details, lifting rate, etc.; With touch screen locking function to prevent misoperation.
- Built-in 10 lift/drop rate gears, which can be customized according to experimental needs to ensure good centrifugation results. It adopts imported high-efficiency and environmentally friendly refrigeration system, intelligent pre-cooling, fast cooling speed, low noise, high temperature control accuracy, and optional heating module.
- It can not only centrifugate at high speed (22000r/min) or with large capacity (4×750ml), making it a multi-functional machine.
- With diagnostic functions such as door cover and misoperation, the machine can directly display fault information, which is convenient for judgment and maintenance, and ensures the safety of man and machine.

Maximum Speed	22000r/min
Maximum RCF	35713×g
Maximum Capacity	4×750ml
Speed Accuracy	±10r/min
Timing Range	0-99h59min59s
Temperature Rang	-20°C~+40°C
Temperature Control Accuracy	±1°C
Noise	≤65dB(A)
Power Supply	Ac220V 50Hz 20A/2200W
Net Weight	140KG
Dimensions	760×590×830mm(L×W×H)

Refrigeration Centrifuge



J21K-LR Benchtop High Speed Large Capacity Refrigerated Centrifuge (High and Low Speed)

● Applications

It is suitable for molecular biology, protein, DNA, RNA, blood component separation and cell component separation, etc., and is widely used in clinical medicine, life science, bioengineering, biochemistry, medical research, agriculture and animal husbandry, biopharmaceutical and other fields.



Angle rotor: 6x50ml



Angle rotor: 6x100ml



Horizontal rotor : 4x750ml

● Product Features

- Steel body, high-torque brushless AC inverter motor drive: no toner pollution, low noise, low vibration, high speed control accuracy.
- Programmable color touch screen and 8-button dual operating system for users to choose freely. The interface can display: rotation speed, centrifugal force, running time, rotor number and details, lifting rate, etc.; With touch screen locking function to prevent misoperation.
- Built-in 10 kinds of rise/fall rate gears, which can be customized according to experimental needs to ensure good centrifugation effect.
- Adopt imported high-efficiency and environmentally friendly refrigeration system, intelligent pre-cooling, fast refrigeration speed, low noise, high temperature control accuracy, optional heating module.
- It can be centrifuged at high speed (21000r/min) and with large capacity (4x750ml), and it can be multi-functional.
- With diagnostic functions such as door cover and misoperation, the machine can directly display fault information, which is convenient for judgment and maintenance, and ensures the safety of man and machine.

Maximum speed	21000r/min
Maximum RCF	32540×g
Maximum capacity	4×750ml
Speed accuracy	±10r/min
Timing range	0-99h59min59s
Temperature rang	-20°C~+40°C
Temperature control accuracy	±1°C
Noise	≤60dB(A)
Power supply	Ac220V 50Hz 10A/1300W
Net weight	110KG
Dimensions	740×670×370mm(L×W×H)



+86-0523-88858868
aifatek@163.com
www.aifatek.com

SHANGHAI AIFA TECHNOLOGY CO., LTD.

COMPANY INTRODUCTION

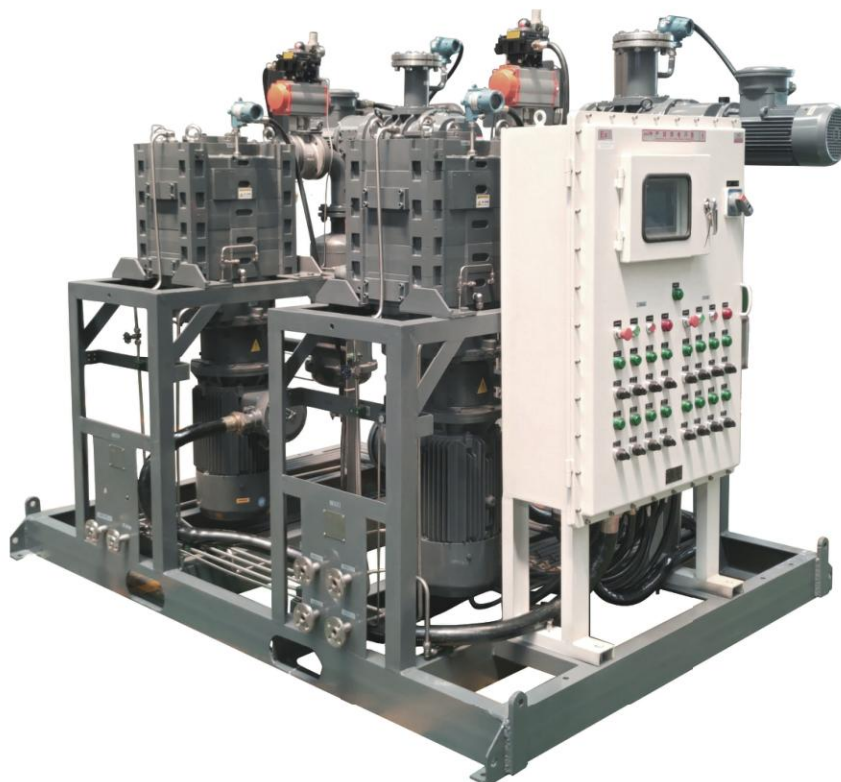
Shanghai Aifa Technology Co., Ltd. was established in 2009. It is a high-tech enterprise that integrates the research and development, production, sales, and after-sales service of dry vacuum pumps and vacuum solvent recovery systems, with its headquarters located in the national economic center of Pudong New District, Shanghai.

The company's products are mainly used for reduced pressure distillation, solvent recovery and reuse, gas-liquid recovery in drying processes, refining processes in distillation columns, energy-saving transformations of steam jet pumps, and centralized lithium battery vacuum systems, all featuring no wastewater discharge, no pollution, energy conservation, and emission reduction, thus providing a high return on investment and creating maximum value for customers in energy savings and consumption reduction.

Company philosophy: Energy conservation and emission reduction, recycling, and systematic, professional solutions to create maximum value for society.



1 Vertical Claw Vacuum System



Serial Number	Project	Parameter Description
1	Device Name	Vertical claw type vacuum pump series
2	Inlet Ultimate Pressure	≤30Pa(A)Four-stage compression≤3pa
3	Discharge Working Pressure	150KPa(A)(Maximum)
4	Applicable Media	Benzene, alcohols, lipids and other high and low boiling point organic solvents
5	Pumping Speed (L/S)	50/70/110/150/200/300
6	Power (Kw)	5.5/7.5/11/15/18.5/22/30
7	Air Intake	DN80/100
8	Exhaust Port	DN50
9	Shaft Seal Type	Composite seal (expansion ring, labyrinth, spiral reverse thrust, nitrogen, lip seal)
10	Bearings	FAG/NSK/SKF
11	Startup Method	Direct start-up at atmospheric pressure, variable frequency adjustment
12	Explosion-proof/variable Frequency Motor	AC380V,50HZ,EXdIIBT4/CT4,IP55
13	Transmission Mode	Direct drive
14	Cooling Medium	Tops refrigerant/direct water cooling (a polyol mixture, coolant, better performance than ethylene glycol)
15	Normal Circulating Water Volume	1m3/h
16	Noise (dB)	≤78
17	Rotor Material	17-4PH
18	Shell Material	Spraying tungsten carbide
19	Overcurrent Part	Anti-corrosion treatment
20	Sleeve Material	2Cr13 surface sprayed ceramic

Vacuum Pump Series

+86-0523-88858868
aifatek@163.com
www.aifatek.com

2 Screw Vacuum Unit



Serial Number	Project	Parameter Description
1	Device Name	Screw Vacuum Unit
2	Inlet Ultimate Pressure	≤5/50Pa(A)
3	Discharge Working Pressure	3K-5KPa(A)(maximum)
4	Applicable Media	Benzene, alcohol, lipids and other high and low boiling point organic solvents
5	Pumping Speed (L/S)	70/150/300/600/1200
6	Power (Kw)	Backstage dry pump+roots
7	Air Intake	DN80/100
8	Exhaust Port	DN50
9	Shaft Seal Type	Composite seals (ring, maze, spiral thrust reverser, nitrogen, lip seals)
10	Bearings	FAG/NSK/SKF
11	Startup Method	Atmospheric pressure is directly started and frequency conversion is adjusted
12	Explosion-proof/variable Frequency Motor	AC380V,50HZ,EXdIIBT4/CT4.IP55
13	Transmission Mode	Direct drive
14	Cooling Medium	Taupes Refrigerant/Direct Water Cooling (a polyol blend, refrigerant, better performance than ethylene glycol)
15	Normal Circulating Water Volume	1m3/h
16	Noise (dB)	≤80
17	Rotor Material	17-4PH
18	Shell Material	Spraying tungsten carbide
19	Overcurrent Part	Anti-corrosion treatment
20	Sleeve Material	2Cr13 surface sprayed ceramic

STIER (GUANGZHOU) INSTRUMENT CO., LTD.

Product Features

5D Non-Destructive Intelligent Cleaning
 Optimized design comprising power, temperature, drying, water quality, and the cleaning solution. Does not damage glassware

Intelligent Water Softener
 Softens tap water
 Direct use of tap water for cleaning
 Save pure water usage

Patented Condenser
 Avoid the venting of vapors into the room
 Operates independently of the ventilation system

Wide Selection of Basket Racks
 Provide the largest variety of rack options
 Adaptable to different glassware
 Customizable basket racks

Hot Air Drying/Residual Heat Drying
 O Semiconductor-guided drying /residual temperature drying system
 No pollutant precipitation
 Eliminates Separate Drying Workflow

Peristaltic Pump
 Avoid crystallization of the cleaning solution inside
 Neoprene tube, acid and alkali resistant, no need to replace

Hot Air Drying/Residual Heat Drying
 O Semiconductor-guided drying /residual temperature drying system
 No pollutant precipitation
 Eliminates Separate Drying Workflow

Peristaltic Pump
 Avoid crystallization of the cleaning solution inside
 Neoprene tube, acid and alkali resistant, no need to replace

Product Features



Large Capacity
 Compact Design, High Throughput
 Low Operating Cost
 Energy-Saving Operation



Rear Water Supply Design
 New Generation Water Supply System
 Shorter Flow Path
 Stronger Cleaning Power



Flexible Rack Combination
 Lego-Style Modularity combinations
 Simultaneous Washing for Diverse Glassware



Individually Adjustable Racks
 Height-Adjustable per Rack
 Custom Racks for Different Glassware
 Optimized Cleaning Efficiency

Product Parameters



Laboratory Glassware Washer S8000D	
External Diameter(mm)	W900*D700*H870(850)
External Material	304 Stainless Steel, Fingerprint-Resistant
Inner Chamber Material	316 Stainless Steel
Drying Method	Hot Air Drying
Power Supply	3N AC 380V 50Hz/AC 220V 50HZ
Rated Power(KW)	9/6.5
Heating Power(KW)	8/5
Water Softener	Standard,Built-in
Steam Condenser	Standard,Built-in
Detegent Level Sensor	Standard,Built-in
Detegent Distribution Pump	Standard,Built-in
Noisie(dBA)	≤70
Weight(kg)	95
HEPA Filiter	Optional
Conductivity Sensor	Optional

More components available for selection



Tabletop Laboratory Glassware Washer S20	
External Diameter(mm)	W600*D600*H690
External Material	304 Stainless Steel, Fingerprint-Resistant
Inner Chamber Material	316 Stainless Steel
Drying Method	Residual Heat Drying
Power Supply	220V
Heating Power(KW)	3
Washing Pump Power(KW)	0.3
Total Power(kw)	3.3
Water Supply	Cold Water,Hot Water,or Purified Water
Connector	International Quick Connector
Tap Water Pressure Requirement (MPa)	0.04-1.00
Noisie(dBA)	≤70
Weight(kg)	95
HEPA Filiter	Optional
Conductivity Sensor	Optional

More components available for selection

YAN JIALONG MECHANICAL TECHNOLOGY(JIANGSU)CO.,LTD.

COMPANY INTRODUCTION

Yanjialong Mechanical Technology (Jiangsu) Co., Ltd. is a service provider focusing on evaporation (concentration) crystallization equipment. Adhering to the beautiful vision of "recycling every drop of water", we have always focused on the research and development, design and manufacturing of evaporator technology products, and have an experienced technical team.

Yanjialong is currently a high-tech evaporator enterprise with a full range of pilot equipment for multi-effect evaporators, falling film evaporator pilot equipment, and MVR evaporator pilot equipment in China. At present, the company has a relatively large evaporator R&D and production base, with its own production workshop and laboratory test equipment, which can conduct material analysis for customers in a timely manner.

Yanjialong Company has more than 10 years of engineering experience and performance in testing, design, processing, installation, commissioning and after-sales service, with a technical team of more than 30 people. The company has obtained a number of high-tech enterprise certificates through the ISO9001 quality certification system, and has a number of patents for various inventions and utility models, many of which have reached the domestic forefront level, the company is committed to making the water clearer, the sky bluer, and the environment more beautiful.

Muti-effect Evaporator



High-speed Centrifugal Spray Dryer





1 MVR Evaporator

● Descriptions

MVR is the abbreviation of mechanical vapor recompression. The MVR evaporator significantly reduces external energy demand by recovering and reusing the energy from its own generated secondary steam. Its working principle involves compressing and heating low-temperature secondary steam through a compressor, which is then recycled as heating steam, achieving efficient thermal energy recovery. Since the 1960s, this technology has been widely applied in industries such as chemical, pharmaceutical, and wastewater treatment. It operates without the need for additional live steam (except during startup) and fully utilizes secondary steam, offering substantially improved thermal efficiency compared to traditional evaporation technologies.

● Application scope

This equipment is suitable for pharmaceutical, biological, food, chemical and other industries, and is often used for evaporation and concentration of traditional Chinese medicine extracts, juices, fine chemical solutions, wastewater, etc.

NO.	Features
1	Low energy consumption and low operating costs. Theoretically, the use of MVR evaporators can save more than 80% of energy compared to traditional evaporation equipment; In fact, the energy required to evaporate 1000kg of water is only 1/6 to 1/5 of that of traditional evaporators (note: when the materials are different, the energy consumption changes), and its operating cost is also significantly reduced, generally only 35~50% of the traditional evaporator.
2	The equipment is compact and occupies a small footprint. Compared with multi-effect evaporation, the footprint can be reduced by more than 50%.
3	There are fewer supporting public works. MVR's heating chamber is the steam condenser, which does not require a separate steam condenser and a large circulating cooling water system can save more than 90% of cooling water.
4	Mainly use electrical energy. Except for a small amount of industrial steam heating during the start-up phase, only clean electrical energy is required during normal operation, and no industrial steam is required.
5	Smooth operation and high degree of automation. The MVR system controls the system temperature, pressure and rotation speed in the form of DCS/PLC, industrial computer and configuration software to maintain the evaporation balance of the system.
6	Single-stage vacuum evaporation is adopted, and the evaporation temperature is low (45~85°C), which is especially suitable for the concentration of evaporation of heat-sensitive materials.

1 Vacuum Dryer

● Descriptions



The vacuum dryer is a new type of concentration equipment mainly based on horizontal conduction heating. It is widely used in the treatment of waste liquids with high salt content, high COD, and those requiring solvent recovery (such as electroplating, chemical waste liquids, metal wastewater, etc.). It is suitable for continuous/batch production, integrates multiple functions, and is energy-saving and environmentally friendly.

The equipment takes the jacket and hollow disc (shaft) as the core of indirect heat conduction and supports vacuum/atmospheric pressure operation. The special distributor enables uniform feeding of materials. Drying is achieved by controlling the residence time. In low gas volume scenarios, only a small amount of inert gas purging is needed to recover the solvent.

● Working Principle

It is composed of a main shaft (hollow disc), a cylinder (hollow shaft), a jacket (outer cylinder), etc. Materials enter the inner cylinder through the distributor and are heated by indirect conduction. Vacuum or atmospheric pressure mode can be selected as needed. The drying is completed by controlling the residence time of materials, and then the materials are discharged from the outlet.

NO.	Features
Energy-saving	With the indirect conduction design, most of the energy is absorbed by materials, resulting in little loss.
Environmental protection	There is no tail gas overflow in the vacuum environment, the solvent can be recovered, and there is no cost for environmental protection treatment.
High efficiency	The heat transfer area per unit volume is large, which shortens the processing time and reduces the equipment footprint.
Wide adaptability	It is compatible with various heat media, can handle heat-sensitive and conventional materials, and covers multiple working conditions.
Stability	The distributor enables full contact between materials and the heat exchange surface, resulting in small fluctuations in temperature, humidity and particle size, and stable process.
Durability	The mechanical seal is optimized, resulting in little shaft wear, long seal life and reduced operation and maintenance costs.



+86-17721469662
 gaopin.yang@ppspharms.com
 www.ppspharms.com

PHARMACEUTICAL PROCESSING SOLUTION CO., LTD.

Twin screw hot melt extrusion system: from R&D to production

<p>Formulation Studies < 10g</p>  <p>PPS TSE Elf</p>	<p>Process optimization 50g~2kg</p>  <p>PPS TSE16 P</p>	<p>Production 2~40kg/h</p>  <p>PPS TSE18 P+ and above</p>
------------------------------------------------------------------------------------------------------------------------------------------	------------------------------------------------------------------------------------------------------------------------------------------	----------------------------------------------------------------------------------------------------------------------------------------------

Hot melt extrusion platform technology

 <p>Implant platform technology</p>	 <p>Oral dissolving films platform technology</p>	 <p>Hot melt spray congealing platform technology</p>
-----------------------------------------------------------------------------------------------------------------------	-------------------------------------------------------------------------------------------------------------------------------------	-------------------------------------------------------------------------------------------------------------------------------------------

Our advantages

- Domestic pharmaceutical companies adopted our PPS TSE18 P for commercial operation of products and was approved for marketing in 24. Provide customized services to meet the special needs of customers.
- Provide computer simulation process development services (which cannot be provided by other brands), saving time, money and resources for process development.
- Based on a deep understanding of principles and long-term industrial practice, we provide the most professional pre-sales and after-sales services.

Partners



HUNAN QIQIN ENVIRONMENTAL PROTECTION TECHNOLOGY CO., LTD.

COMPANY INTRODUCTION

Hunan Qiqin Environmental Protection Technology Co., Ltd. is located in the historical and cultural city of Changsha, China. In 2000 year, Qiqin began to engage in the research and development, production and manufacturing of water treatment equipment. The main services include wastewater treatment equipment, ultrapure water equipment, pure water equipment, hospital overall water supply, water recycling, pipe network construction, etc. Products are widely used in hospitals, scientific research institutes, enterprises and other fields.

As a professional manufacturer of water treatment equipment, the excellent performance of our products is only one of our commitments to customers, we pursue not only technical excellence, but also high standards in service, to provide customers with excellent experience.

Qiqin is not only a practitioner of environmental sustainable development, but also an active promoter of this concept. Based on innovative technologies, we are committed to providing high-quality services, and work with you to protect clear water and blue sky, restore ecological balance, and benefit future generations.



Main product categories

 Pure Water Equipment for Laboratory

 Industrial Water Purification Equipment

 Medical Pure Water Equipment

 Wastewater Treatment Equipment

1 Purified Water Equipment For Biopharmaceuticals

Brief introduction

Qiqin provides a complete set of water treatment solutions for biopharmaceutical. The biopharmaceutical water preparation system follows the modular design concept, based on functional units such as pretreatment, oxidation disinfection, multi-media filtration, RO reverse osmosis, UV disinfection, EDI continuous deionization and storage and transportation, and implements advanced technology, exquisite technology and strict quality control to each functional unit in the design, manufacturing and commissioning process; The final water production device is optimized and combined by various functional modules according to different water standards, so as to ensure the high performance and high quality of the whole system, so that the produced water can fully meet or exceed the standards of purified water and water for injection, and meet the water requirements for purified water or distilled water by pharmaceutical factories, hospitals and laboratory diagnostic reagents. The entire system is made of SUS304L or SUS316L stainless steel. Available disinfection methods are: activated carbon pasteurization, CIP cleaning system, ozone sterilization of distribution system, pasteurization of distribution system, pure steam sterilization of distribution system.



Integrated services for water systems

Qiqin provides full-process services including system design consulting, system equipment, GMP verification consulting, upgrading, operation and maintenance, etc.



International standards

System is designed in accordance with the latest Chinese, American and European Pharmacopoeia water quality standards, in line with GMP, FDA certification requirements, cGMP, ISPE/FDA guidelines.



Pre-sale service

URS requirements analysis, design, installation, commissioning, verification, training.



Validation consulting services

Qiqin provides GMP, FDA verification consulting and system DQ, FAT, IQ, QQ, SAT, PQ verification data.



Data-based management

Mobile phone Internet of things remote monitoring data platform, timely feedback of system operation problems.

Purified water system

+86-18874711558
export@csqiqin.com
www.csqiqin.com



1 Central Pure Water System for Laboratory (dual-core)

- ✓ Dual-module uninterrupted water production
self-adaptation of high and low peak water supply
- ✓ Six-channel high sensor
Real-time monitoring of water quality
- ✓ Date and time setting
Optional timed power on/off
Fault and alarm records
- ✓ Permission confirmation, Security
Separation of water and electricity, Voltage safety protection
- ✓ Dual 10-inch HD touchscreen
Minimalist interactive design
- ✓ Integration and built-in dual-module
Small footprint less than 2m²
- ✓ Antibacterial design, Sterilizing respirators
Dual-band UV sterilization
Strictly control the growth of bacteria in water
- ✓ Built-in integrated water tank

2 Ultrapure Water System Q-STER-T Series

The best choice for high-end ultrapure water users. The Q-STER-T series is an efficient, convenient and high-quality ultrapure water system, the -D series uses tap water as the water source, and the -MV series uses pure water, distilled water, reverse osmosis water and secondary water as the inlet water to produce high-quality ultrapure water. The output water meets and exceeds type I water quality standards of ASTM, CLSI and GB-T6682-2008 for analytical laboratory water.

- ✓ ABS integrated molding engineering plastics are used to eliminate corrosion and rust.
- ✓ 5-inch large screen, real-time display of running status.
- ✓ USB interface, support data copying, downloading, printing, storage.
- ✓ Automatically record 5 years of water quality data to help laboratory data statistics.
- ✓ Real-time monitoring of raw water, RO water, and UP ultrapure water quality.
- ✓ It can detect data such as water temperature, TOC value, and tank level.
- ✓ The circulating system starts and stops as needed to keep the system pollution-free.
- ✓ The two-levels passwords to the factory and the user, and the system settings are password protected to prevent unauthorized changes.



Walk-in Stability Chamber



1 Walk-in Stability Chamber

● Technical specifications

- Temperature Fluctuation : $\pm 0.5^{\circ}\text{C}$
- Temperature Uniformity : $\pm 1.0^{\circ}\text{C}$
- Humidity Fluctuation : $\pm 2.0\% \text{RH}$
- Humidity Uniformity : $\pm 3.0\% \text{RH}$
- Environment Temperature : $5\sim 35^{\circ}\text{C}$
- Power : 380V/220V 50Hz/60Hz

● Hardware

- Compressor : Imported Frequency Conversion Compressor, Energy conservation $> 50\%$.
- Controller : Programmable touch screen, 7 inch & colored; Three levels Authority, Assign more levels; Audit tracking, Operation records; Frequency conversion, Display the frequency output; Prompt Reminder, Periodic maintenance reminder.
- Evaporator : Coating process, Corrosion resistance doubled.
- Humidifier : PTC Heating material, Automatic protection.
- Humidity Sensor : High precision capacitive.
- Water System : Automatic water circulation.
- Construction : The inside and outside are stainless steel 304.
- Viewing Window : Double-Layer tempered glass viewing window.
- Safety Device : Five layers of protection.

● Technological Benefits

- Performance : With maximum homogeneity, enables the chamber to meet the requirements of ICH stability test under full load even after years.
- Reliable : In addition to better fluctuation and uniformity, it has been tested for 15 years.
- Smart : In addition to more stable controls, there are more maintenance reminders.
- Economical : Over 50% lower energy consumption than the previous model thanks to modern inverter cooling technology.
- Safety : Five-safety protections, with essential leakage protection.
- Costs : Includes built-in power meter for real-time energy cost tracking.

Model	Temperature Range (°C)	Humidity Range (RH)	Capacity (m ³)	Interior Dimensions(mm) W×D×H	External Dimensions(mm) W×D×H	Power (kW)	Remarks
Labonco-8000GS	20 ~ 45	20~80%	8	1900×2200×2000	2050×3150×2250	5.0	Reasonable layout can be arranged according to the site customizable dimensions
Labonco-15000GS	20 ~ 45	20~80%	15	1900×4000×2000	2050×4950×2250	5.5	
Labonco-20000GS	20 ~ 45	20~80%	20	2200×4100×2200	2400×4300×2400	5.5	
Labonco-33000GS	20 ~ 45	20~80%	33	2950×5200×2200	3150×5400×2400	6.5	
Labonco-40000GS	20 ~ 45	20~80%	40	3600×5200×2200	3800×5400×2400	7.0	
Labonco-60000GS	20 ~ 45	20~80%	60	4400×6400×2200	4600×6600×2400	8.0	
Labonco-80000GS	20 ~ 45	20~80%	80	5800×6400×2200	6000×6600×2400	9.0	

High Accuracy Stability Chamber

+86-13811790181
 export@labonco.com
 www.lanbeishi.com



2 Stability Chamber FS

● Technical specifications

- Temperature Rang : 0~70°C
- Temperature Fluctuation : ±0.2°C
- Temperature Uniformity : ±0.5°C
- Humidity Range : 10~80%RH
- Humidity Fluctuation : ±1.5%RH
- Humidity Uniformity : ±2.5%RH
- Environment Temperature : 5~35°C
- Power : 220V 50Hz/60Hz

● Hardware

- Compressor : Imported Frequency Conversion Compressor
Energy conservation > 50%.
- Controller : Programmable touch screen,7 inch & colored;
Three levels Authority,Assign more levels;
Audit tracking,Operation records;
Frequency conversion,Display the frequency output;
Prompt Reminder,Periodic maintenance reminder.
- Evaporator : Coating process,Corrosion resistance doubled.
- Humidifie : PTC Heating material,Automatic protection.
- Humidity Sensor : High precision capacitive.
- Water System : Automatic water circulation.
- Construction : The inside and outside are stainless steel 304.
- Double Door : The inner door is tempered glass
Door heating to prevent condensation.
- Safety Device : Five layers of protection.

● Technological Benefits

- Performance : Strong competitiveness in both export and domestic substitution,because of the excellent uniformity of the chamber.
- Reliable : In addition to better fluctuation and uniformity, it has been tested for 17 years.
- Smart : In addition to more stable controls, there are more maintenance reminders.
- Economical : Over 50% lower energy consumption than the previous model thanks to modern inverter cooling technology.
- Safety : Five-safety protections, with essential leakage protection.
- Flexible : In addition to constant temperature and humidity test, multi-temperature zone design scheme can also carry out long-term 2~8°C refrigeration test.

Name	Model	Temperature Range (°C)	Humidity Range (RH)	Capacity (L)	Interior Dimensions(mm) W×D×H	External Dimensions(mm) W×D×H	Power (kW)	Shelf (Standard)
Stability Chamber	Labonco-250FS	0 ~ 70	10 ~ 80%	250	600×500×830	780×880×1650	1.8	3/7
	Labonco-720FS	0 ~ 70	10~80%	700	975×575×1250	1280×880×1940	2.5	4/8
High-precision constant temperature test chamber	Labonco-250FT	0 ~ 70	N/A	250	600×500×830	780×880×1650	1.3	3/7
	Labonco-720FT	0 ~ 70	N/A	700	975×575×1250	1280×880×1940	2.0	4/8

3 Stability Chamber GS-FC



● Technical specifications

- Temperature Rang : 10~65°C
- Temperature Fluctuation : ±0.5°C
- Temperature Uniformity : ±0.5°C
- Humidity Range : 15~95%RH
- Humidity Fluctuation : ±2.0%RH
- Humidity Uniformity : ±3.0%RH
- Environment Temperature : 5~35°C
- Power : 220V 50Hz/60Hz

● Hardware

- Compressor : Imported Frequency Conversion Compressor
Energy conservation > 50%.
- Controller : Programmable touch screen,7 inch & colored;
Three levels Authority,Assign more levels;
Audit tracking,Operation records;
Frequency conversion,Display the frequency output;
Prompt Reminder,Periodic maintenance reminder.
- Evaporator : Coating process,Corrosion resistance doubled.
- Humidifier : PTC Heating material,Automatic protection.
- Humidity Sensor : High precision capacitive.
- Water System : Automatic water circulation.
- Construction : Stainless steel 304 inside.
- Double Door : The inner door is tempered glass
Door heating to prevent condensation.
- Safety Device : Five layers of protection.

● Technological Benefits

- Performance : With maximum homogeneity,enables the chamber to meet the requirements of ICH stability test under full load even after years.
- Reliable : In addition to better fluctuation and uniformity, it has been tested for 17 years.
- Smart : In addition to more stable controls, there are more maintenance reminders.
- Economical : Over 50% lower energy consumption than the previous model thanks to modern inverter cooling technology.
- Safety : Five-safety protections, with essential leakage protection.

Model	Temperature Range (°C)	Humidity Range (RH)	Capacity (L)	Interior Dimensions(mm) W×D×H	External Dimensions(mm) W×D×H	Power (kW)	Shelf (Standard)	Remarks
Labonce-150GS-FC	10 ~ 65	15 ~ 95%	150	600×405×625	780×830×1480	1.5	3/6	Single-door
Labonce-250GS-FC	10 ~ 65	15 ~ 95%	250	600×500×830	780×880×1650	1.8	3/7	
Labonce-400GS-FC	10 ~ 65	15 ~ 95%	400	600×700×950	780×1060×1750	2.0	3/10	
Labonce-500GS-FC	10 ~ 65	15 ~ 95%	500	680×680×1080	860×1050×1850	2.2	4/11	
Labonce-800GS-FC	10 ~ 65	15 ~ 95%	800	1200×490×1360	1385×895×1965	2.5	4/8	Double-door
Labonce-1000GS-FC	10 ~ 65	15 ~ 95%	1000	1400×510×1400	1615×925×1975	3.0	4/8	
Labonce-1500GS-FC	10 ~ 65	15 ~ 95%	1500	1500×710×1400	1710×1180×1990	3.2	4/8	
Labonce-2000GS-FC	10 ~ 65	15 ~ 95%	2000	1500×970×1400	1710×1380×1990	3.5	4/8	
Labonce-3000GS-FC	10 ~ 65	15 ~ 95%	3000	1600×1100×1680	1810×1470×2270	3.8	4/8	

JIANGSU LABONCE INSTRUMENT CO.,LTD.

COMPANY INTRODUCTION

Labonce Group: Precision Temperature Control Solutions Since 2008. As an ISO 9001:2015 & CE certified innovator, Labonce Group delivers advanced stability testing systems to over 3,000 enterprises across 50+ countries. Our German-engineered core technology ensures uncompromising precision in:

- ✓ Stability Chamber
- ✓ Photostability Chamber
- ✓ Walk-in Stability Chamber
- ✓ Constant temperature & Humidity Chambers
- ✓ Low-temperature Stability chamber
- ✓ Drying Ovens & Incubators

Engineering Excellence:

- EnergySmart Technology: Achieves 50%+ reductions in energy/water consumption (validated in pharmaceutical GMP audits)
- R&D center in Beijing Zhongguancun Science Park driving continuous innovation.

Global-Local Support:

Operational hubs in Jiangsu (ISO-certified manufacturing), Guangzhou, and Chengdu provide:

- Accelerated 72-hour service
- On-site calibration by certified technicians
- Collaborative validation protocol development



R&D Center area



Pharmaceutical industry customers



R&D Center area

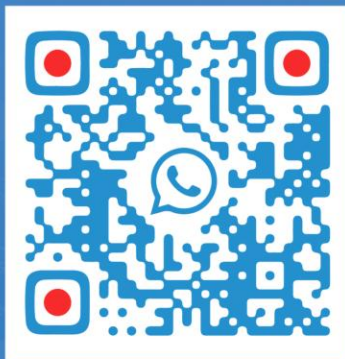


Exporting countries

Main Products



Contact Us



 GlobalEquipX_1

 Globalequipx

 Global Equip X

 Room 1704, Building 2, Baoyi Center, Ningwei Street, Xiaoshan District, Hangzhou city, Zhejiang Province, China

 +86 19033929685

 service@globalequipx.com

Laboratory
Equipment

Pharmaceutical
Equipment

Industrial
Equipment

Lab&Production
Materials

Medical Devices

Services &
Consultation

RECOMMENDED INSTRUMENTS

